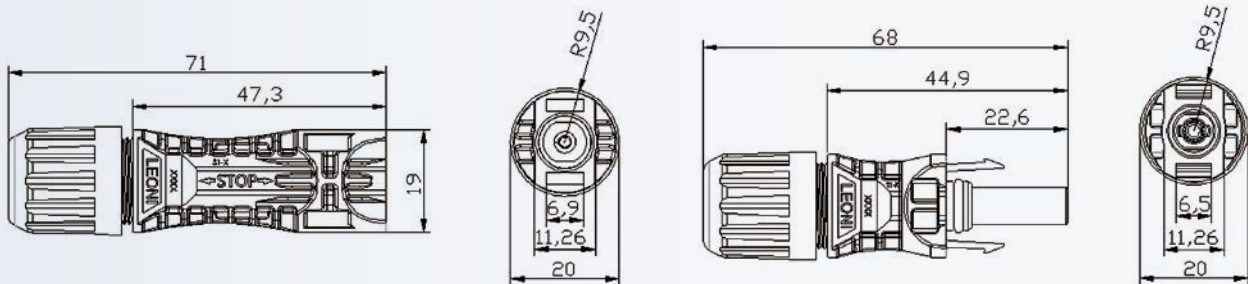
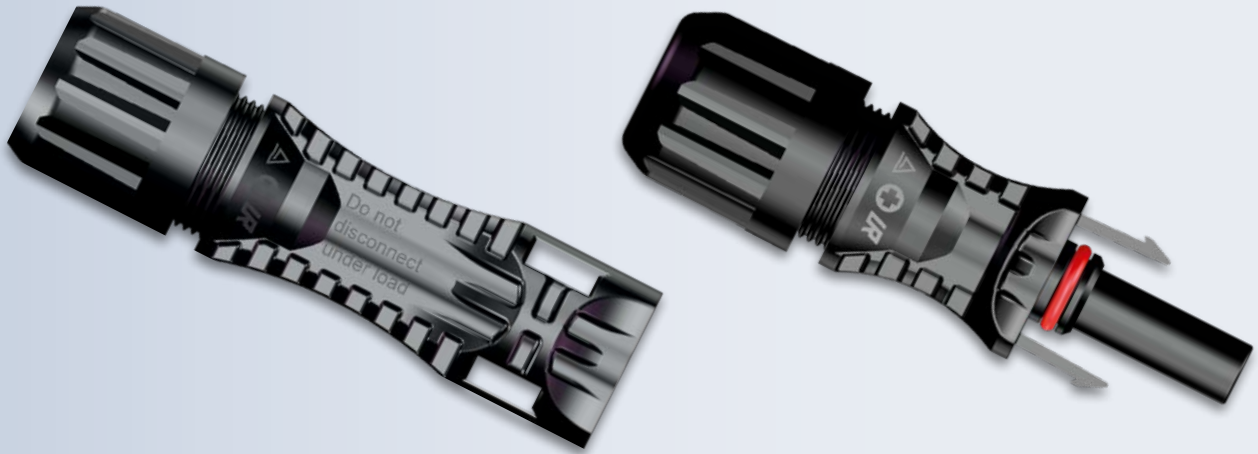


BETA solar® PV Connector

LSC-R1



Technology data sheet

- Rated Voltage: 1000V / 1500V (TÜV), 1000V / 1500V (UL)
- Rated Current: 30A (4/6mm²), 22A (2.5mm²)
- Contact Resistance: ≤0.3mΩ
- Insulation Resistance: >3GΩ
- Protection Degree: IP68(mated), IP2X (unmated)
- Pollution Degree: 2
- Flame Class: UL94-V0
- Rated Impulse Voltage: 8KV
- Temperature Range: -40°C~+85°C
- Wire Size Range: 2.5/4.0/6.0mm² (TÜV), 14/12/10AWG (UL)
- Cable Diameter: Ø5.0~8.0mm

Certification

- TÜV Rheinland Certificate
- UL Certificate